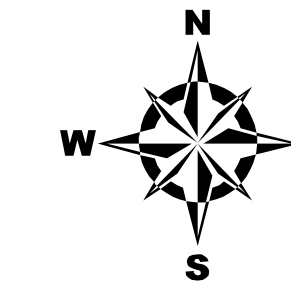




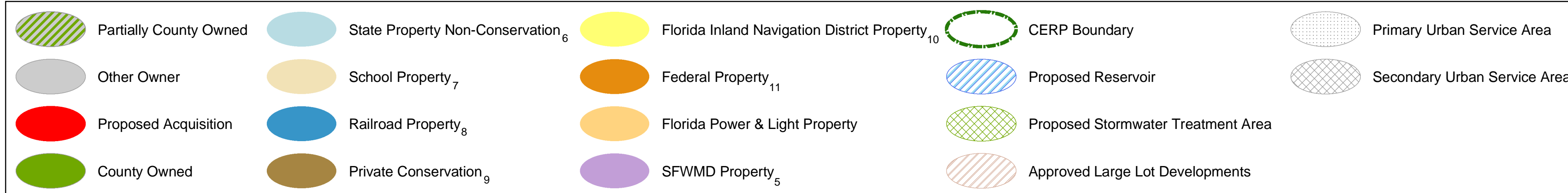
Martin County

Plot Name: G:\projects\its\perrie\Conservation\Cons12_03_03.mxd
Plot Location: G:\projects\its\perrie\PDFs_of_Maps\Cons12_03_03.pdf
Created By: Jamie Perrie (ITS Dept)
Plot Date: January 6, 2004

Conservation Lands Status and Outlook January 2004

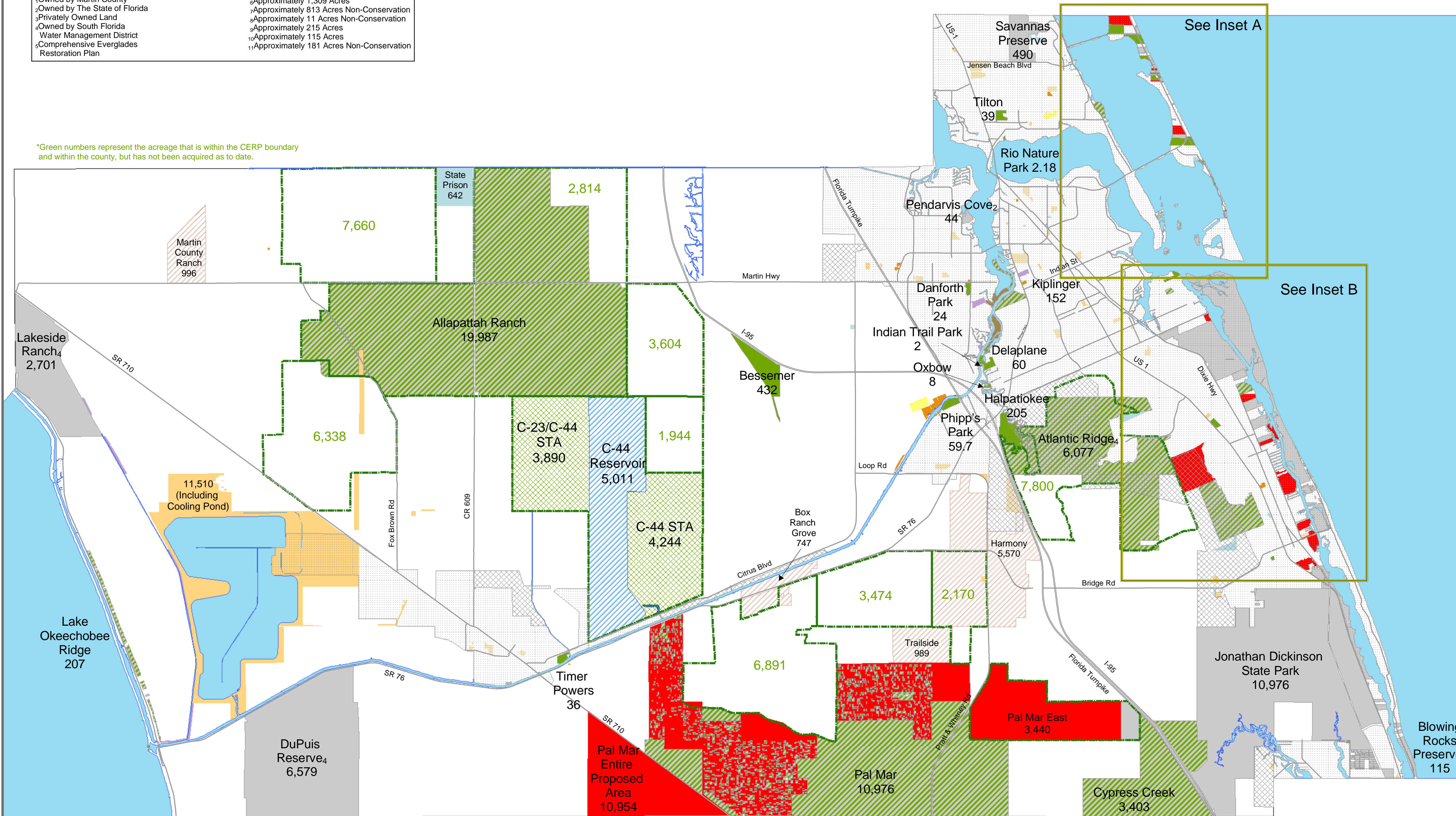


Disclaimer
"This Geographic Information System Map Product, received from Martin County ("COUNTY") in fulfillment of a public records request is provided "as is" without warranty of any kind, and the COUNTY expressly disclaims all express and implied warranties, including but not limited to the implied warranties of merchantability and fitness for a particular purpose. The COUNTY does not warrant, guarantee, or make any representations regarding the use, or the results of the use, of the information provided to you by the COUNTY in terms of correctness, accuracy, reliability, timeliness or otherwise. The entire risk as to the results and performance of any information obtained from the COUNTY is entirely assumed by the recipient."

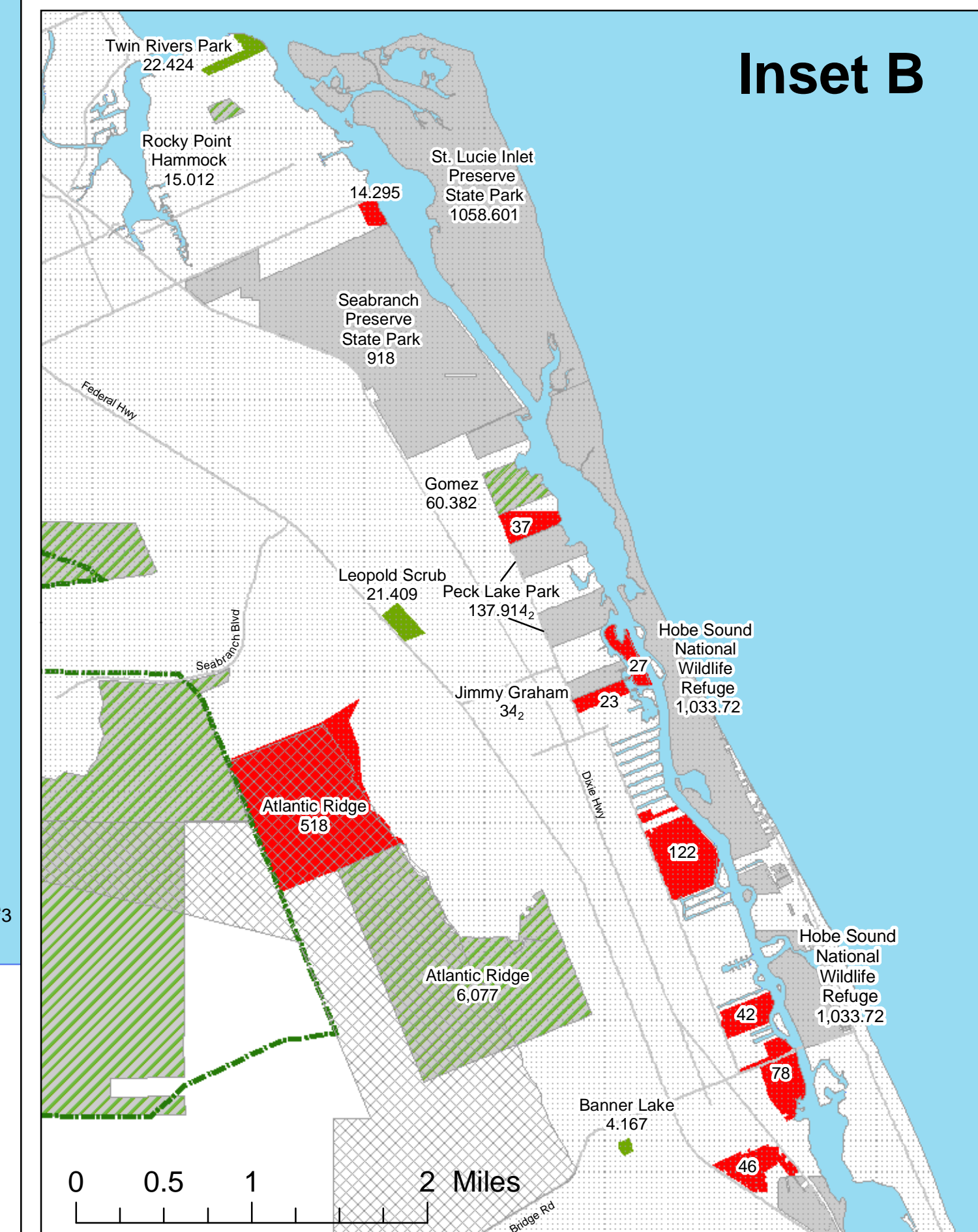
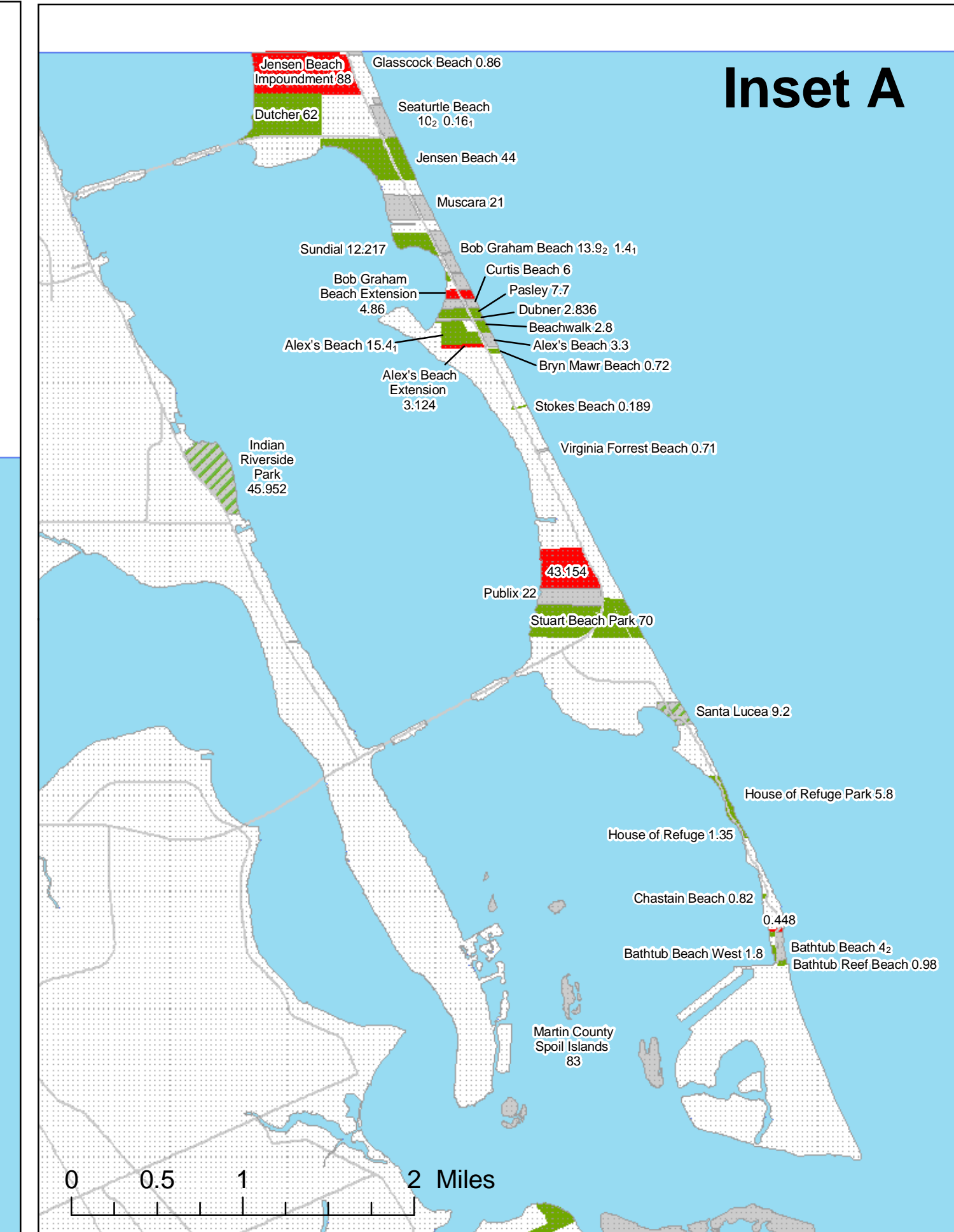


₁Owned by Martin County
₂Owned by The State of Florida
₃Privately Owned Land
₄Owned by South Florida Water Management District
₅Comprehensive Everglades Restoration Plan
₆Approximately 1,309 Acres
₇Approximately 813 Acres Non-Conservation
₈Approximately 11 Acres Non-Conservation
₉Approximately 215 Acres
₁₀Approximately 115 Acres
₁₁Approximately 181 Acres Non-Conservation

*Green numbers represent the acreage that is within the CERP boundary and within the county, but has not been acquired as of date.



0 3 6 12 Miles



0 0.5 1 2 Miles